



Humes (0054)



Asa Eddy sells to Elijah Gore (Coll. 002 Fold. 002 Doc 009)



Obadiah Gore sells to Moses Pierce (Coll. 002 Fold. 002 Doc. 002)



Ebenezer Bishop sells to Ebenezer Fitch (Coll. 002 Fold. 002 Doc. 007)



Peter Spicer sells to Elisha Wilcocks (Coll. 002 Fold. 002 Doc. 008)



Samuel Wentworth sells to Daniel Kelley (Coll. 002 Fold. 002 Doc. 010)



Land transaction by Mr. John Layson (Coll. 002 Fold. 002 Doc. 013)



Nathan Babcock bill (Coll. 002 Fold. 004 Doc. 002)



Jedediah Huntington bill (Coll. 002 Fold. 004 Doc. 003)



Thomas Stanton bill (Coll. 002 Fold. 004 Doc. 004)



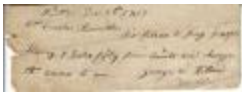
Silas Brewster Bill (Coll. 002 Fold. 004 Doc. 006)



Order from George W. Willard (Coll. 002 Fold. 004 Doc. 007)



G W Willard order (Coll. 002 Fold. 004 Doc. 008)



George W Willard pays Joseph Harvey (Coll. 002 Fold. 004 Doc. 009)



G W Willard pays Asa Benjamin (Coll. 002 Fold. 004 Doc. 010)



G W Willard pays Jeffery D. Green (Coll. 002 Fold. 004 Doc. 011)



Order for Thomas Fitch (Coll. 002 Fold. 004 Doc. 012)



Meeting House Company Bill (Coll. 002 Fold. 004 Doc. 013)



Order to pay from George Willard (Coll. 002 Fold. 004 Doc. 014)



Samuel Holden bill (Coll. 002 Fold. 004 Doc. 015)



Subscriptions for Repairing Meeting house (Coll. 002 Fold. 004 Doc. 017)



First Meeting House Subscriptions (Coll. 002 Fold. 004 Doc. 021)



Third Meetinghouse Subscriptions (Coll. 002 Fold. 004 Doc. 022)



Unpaid Subscriptions (Coll. 002 Fold. 004 Doc. 028)



Report on Meetinghouse accts. (Coll. 002 Fold. 004 Doc. 029)



Payment to Russell (Coll. 002 Fold. 004 Doc. 037)



Harkness and Whipple land description (Coll. 003 Fold. 075 Doc. 015)



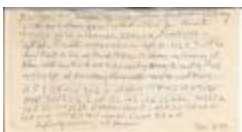
Ames and Whipple property (Coll. 003 Fold. 075 Doc. 018)



Brewster property (Coll. 003 Fold. 075 Doc. 020)



Harkness (Coll. 003 Fold. 075 Doc. 021)



Land description Morgan to Bordman (Coll. 003 Fold. 075 Doc. 022)



Land drawing - Whipple to Beard to Harkness (Coll. 003 Fold. 075 Doc. 023)



Jon. Whipple land (Coll. 003 Fold. 075 Doc. 024)



Poquetanuck Road in 1700s (Coll. 003 Fold. 075 Doc. 025)



Whipple to Capron land drawing (Coll. 003 Fold. 075 Doc. 026)



Humphrey Avery land (Coll. 003 Fold. 075 Doc. 027)



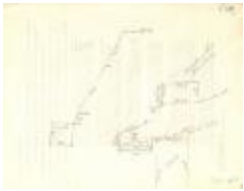
Preston City labeled diagram (Coll. 003 Fold. 076 Doc. 001)



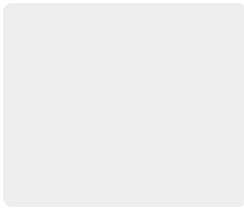
Preston City diagram - no labels (Coll. 003 Fold. 076 Doc. 002)



Preston City blank diagram (Coll. 003 Fold. 076 Doc. 003)



Preston City 1758 diagram (Coll. 003 Fold. 076 Doc. 004)



Preston Historical Society Newsletter Oct. 1972 (Coll. 003 Fold. 077 Doc. 017)



Preston Historical Society Newsletter Feb. 1967 (Coll. 003 Fold. 077 Doc. 001)



Preston Historical Society Newsletter July 1967 (Coll. 003 Fold. 077 Doc. 002)



Preston Historical Society Newsletter Oct. 1967 (Coll. 003 Fold. 077 Doc. 003)



Preston Historical Society Newsletter Feb. 1968 (Coll. 003 Fold. 077 Doc. 004)



Preston Historical Society Newsletter July 1968 (Coll. 003 Fold. 077 Doc. 005)



Preston Historical Society Newsletter Oct. 1968 (Coll. 003 Fold. 077 Doc. 006)



Preston Historical Society Newsletter Feb. 1969 (Coll. 003 Fold. 077 Doc. 007)



Preston Historical Society Newsletter July 1969 (Coll. 003 Fold. 077 Doc. 008)



Preston Historical Society Newsletter Oct. 1969 (Coll. 003 Fold. 077 Doc. 009)



Preston Historical Society Newsletter Feb. 1970 (Coll. 003 Fold. 077 Doc. 010)



Preston Historical Society Newsletter Nov. 1970 (Coll. 003 Fold. 077 Doc. 012)



Preston Historical Society Newsletter July 1971 (Coll. 003 Fold. 077 Doc. 014)



Preston Historical Society Newsletter Feb. 1972 (Coll. 003 Fold. 077 Doc. 015)



**Coll. 003 Fold. 077 Doc. 018 Preston Historical Society Newsletter Feb. 1973
(Coll. 003 Fold. 077 Doc. 018)**



Preston Historical Society Newsletter July 1973 (Coll. 003 Fold. 077 Doc. 019)



Preston Historical Society Newsletter Oct. 1973 (Coll. 003 Fold. 077 Doc. 020)



Preston Historical Society Newsletter March 1977 (Coll. 003 Fold. 077 Doc. 029)



Preston Historical Society Newsletter Oct. 1979 (Coll. 003 Fold. 077 Doc. 035)



Preston Historical Society Program for 1966-1967 (Coll. 003 Fold. 077 Doc. 041)



Activities and Accomplishments of the PHS (Coll. 003 Fold. 077 Doc. 043)



Preston Historical Society article by M.W. Hall [Mayflower Quarterly - Aug. 1981] (Coll. 003 Fold. 077 Doc. 046)



A Brief History of Amos Place (Coll. 003 Fold. 077 Doc. 048)



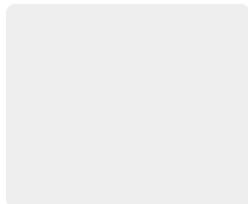
PHS Annual Meeting 1977 (Coll. 003 Fold. 077 Doc. 060)



Preston Historical Society Newsletter July 1974 (Coll. 003 Fold. 077 Doc.022)



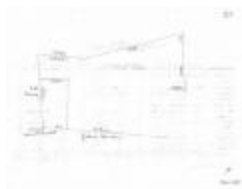
Jonah Witter's Mill (30/29-1797) #271 (Coll. 003 Fold. 090 Doc .002)



Location Diagram-Harold Muttart (#280) (Coll. 003 Fold. 090 Doc. 003)



Diagram of Lot (Mrs. Laura Bennett) #281 (Coll. 003 Fold. 090 Doc. 004)



Lot Diagram #283 (Coll. 003 Fold. 090 Doc. 007)



#283 Continued (Coll. 003 Fold. 090 Doc. 008)



Lot Diagram #284 Harry Myers (Coll. 003 Fold. 090 Doc. 010)



#284 Lot Diagram 14/136 (1803) (Coll. 003 Fold. 090 Doc. 011)



Lot Diagram Edw. Mott to Calvin Barstow (Coll. 003 Fold. 090 Doc. 012)



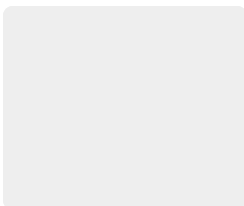
Lot Diagram #285 Witter to Mott (Coll. 003 Fold. 090 Doc. 014)



Lot Diagram Salmon Treat to Samuel 7-280 (1760) (Coll. 003 Fold. 090 Doc. 015)



Lot Drawing # 311 Jon. Brewster to Elias Brown (Coll. 003 Fold. 091 Doc. 001)



Lot Diagram for Richard Fanning (Coll. 003 Fold. 091 Doc. 002)



Lot Diagram for Angeline Gay 1859 (Coll. 003 Fold. 091 Doc. 005)



Lot Diagram #353 (Coll. 003 Fold. 091 Doc. 006)



Lot Diagram #376 and #377 (Coll. 003 Fold. 091 Doc. 007)



Lot Diagram #380-381 (Coll. 003 Fold. 091 Doc. 008)



Lot Diagram - Pride (Coll. 003 Fold. 091 Doc. 009)



Lot Diagram # 382 E. Story to A. Pride (1804) (Coll. 003 Fold. 091 Doc. 010)



Brewster and Pride land (Coll. 003 Fold. 091 Doc. 011)



Ephraim Brewster to Ezra Brewster #416 (Coll. 003 Fold. 091 Doc. 012)



Ezra Brewster to Ephraim Brewster 1776 (Coll. 003 Fold. 091 Doc. 013)



Ezra Brewster to Ephraim Brewster (Coll. 003 Fold. 091 Doc. 014)



Lot Diagrams #413 and #416 (Coll. 003 Fold. 091 Doc. 016)



Lot Diagram Elijah Fitch to Tho Fitch (Coll. 003 Fold. 091 Doc. 017)



Lot Diagram Elijah Fitch to Tho Fitch 1795 #416 (Coll. 003 Fold. 091 Doc. 019)



Radler Rd. #412 and #413 (Coll. 003 Fold. 091 Doc. 020)



State Hospital and Poquetanuck (Coll. 003 Fold. 092 Doc. 001)



Preston City Lot Diagrams (Coll. 003 Fold. 092 Doc. 002)



Lot Diagram Treat, Crary, Downer, Mott (Coll. 003 Fold. 092 Doc. 003)



Lot Diagram West to Reynolds bottom (Coll. 003 Fold. 092 Doc. 004)



Lot diagrams for Preston City Pond (Coll. 003 Fold. 092 Doc. 005)